


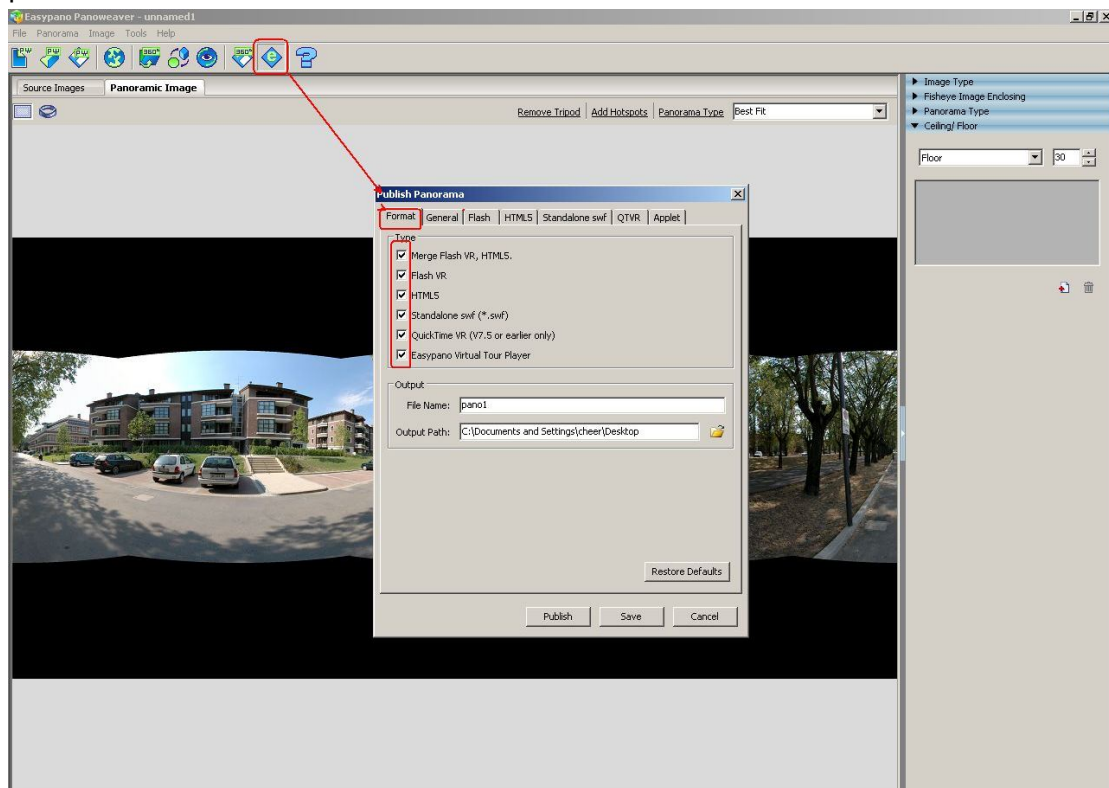
Add Google Maps

With panoweaver7.4, you could include a Google Maps window direct on the viewer.

► Choose format you want to publish



After you have finished stitching, press  and it will come out a setting window "Publish Panorama" then click "format" to choose the format you want publish.



Note: Only *flash* and *standard alone* format support Google map

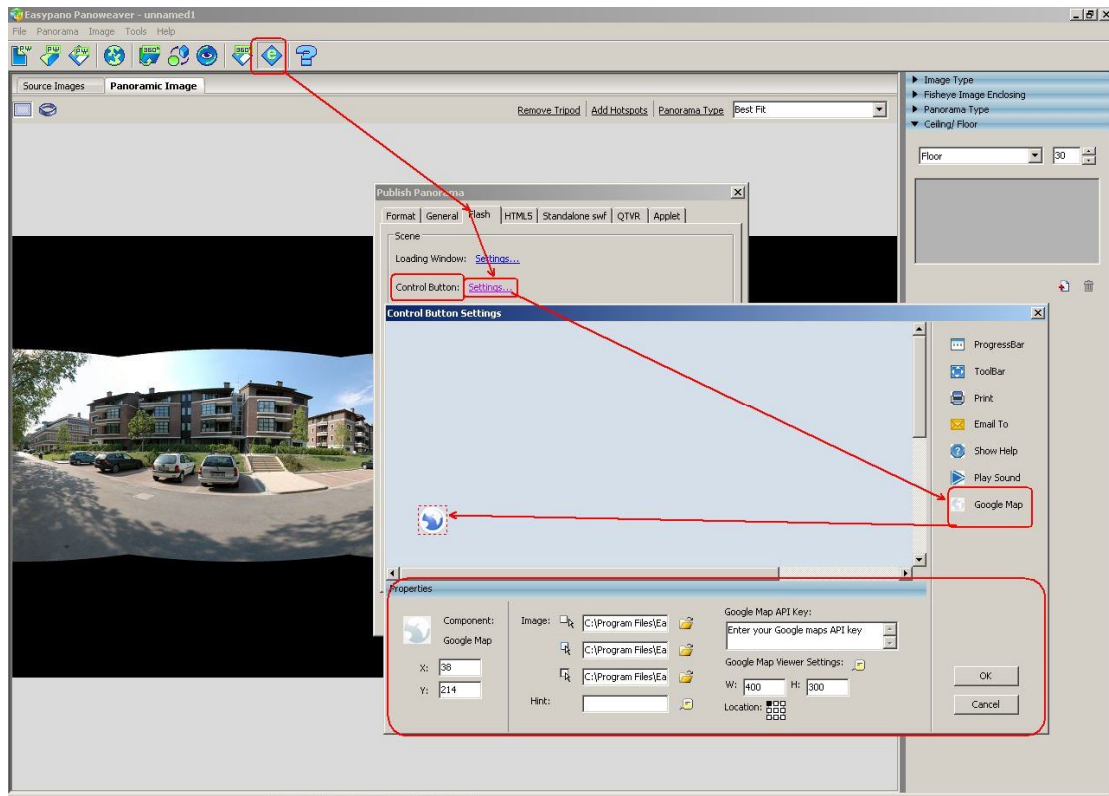
► Set Google Maps

1. After you choose *flash* and *standard alone* format then click *flash* or *standard alone*

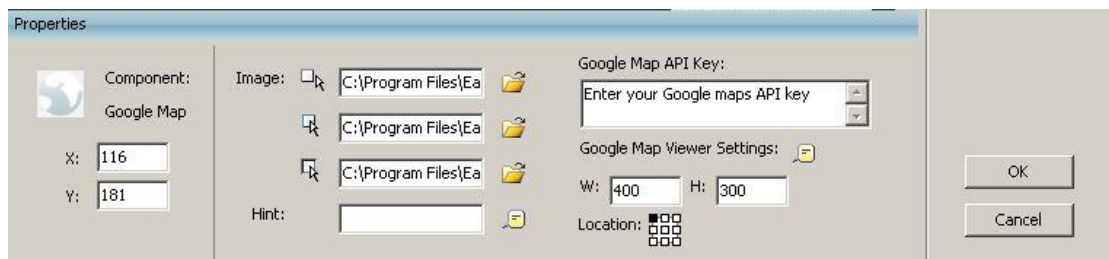
2. Click *control button* setting it will come out a *control button setting* Window.



3. Click  and drag it to the *control button setting*



▶ Set Google Maps Properties



W/H/X/Y: They could all be adjusted.

Google maps API key: to use the Google maps services a Google maps API key is needed! [Sign Up for the Google Maps API](#)



Note: When you apply the Google map API key, they need you input a web site URL. Make sure the website URL you put is same as the web site you want to upload the published flash.

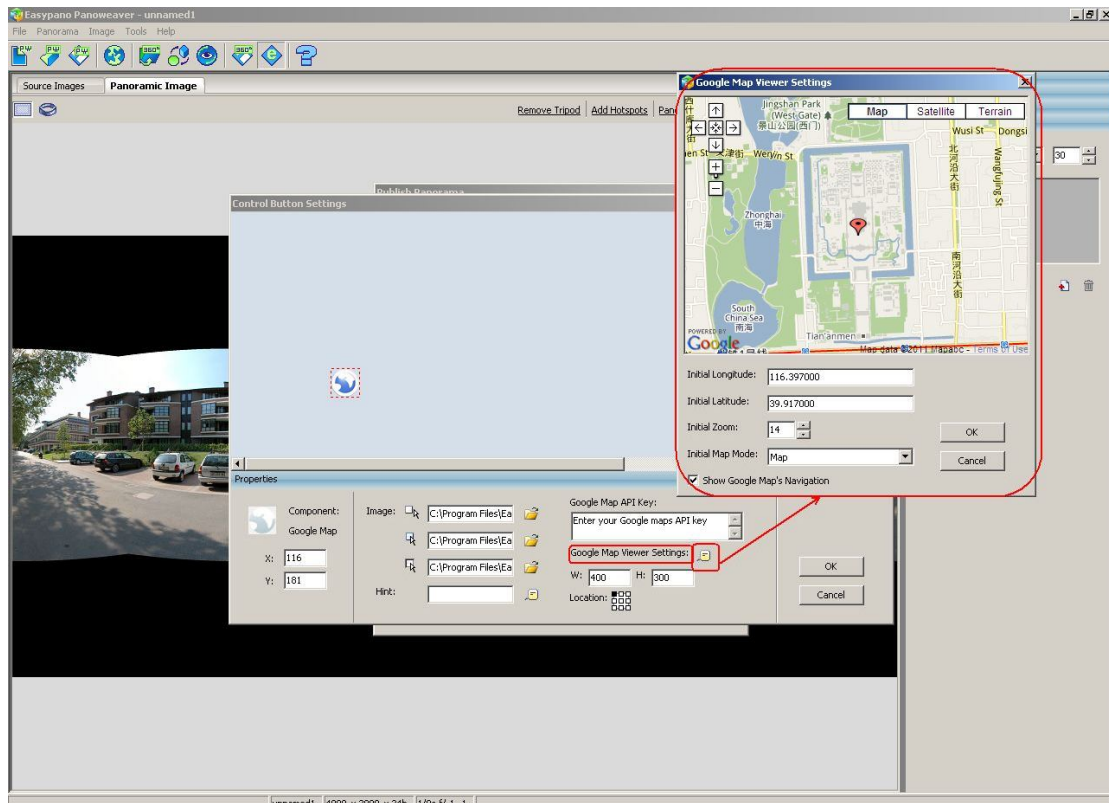
☐ I have read and agree with the terms and conditions ([printable version](#))

My web site URL:

Tip: Signing up a key for [http://yourdomain.com](#) is usually the best practice, as it will work for all subdomains and directories. See this [FAQ](#) for more information.

▶ Set Google Maps Viewer

Click it will come out a *Google map viewer settings*



Current Center Position: The current map position. Display Latitude and Longitude of the current center position.

Start Zoom Level: Initial zoom level, 14 is by default.

Display Initially: There are four options to choose from: *Traffic*, *Map*, *Satellite*, *Earth*. If you'd like to display navigation controls on Google maps, then tick the option *Display Navigation controls on Google Maps*.